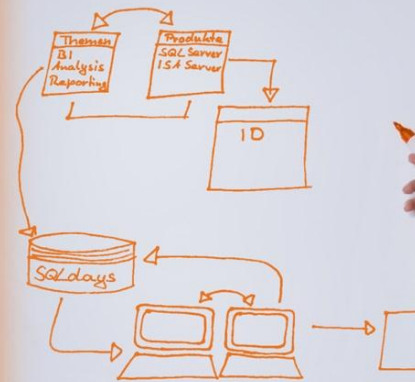


SQLdays
konferenz



Updating SSIS Pakete auf SQL Server 2012 und neue Konfigurationsmöglichkeiten

Alexander Karl

20. – 21. September 2012, Rosenheim

Gold Partner:



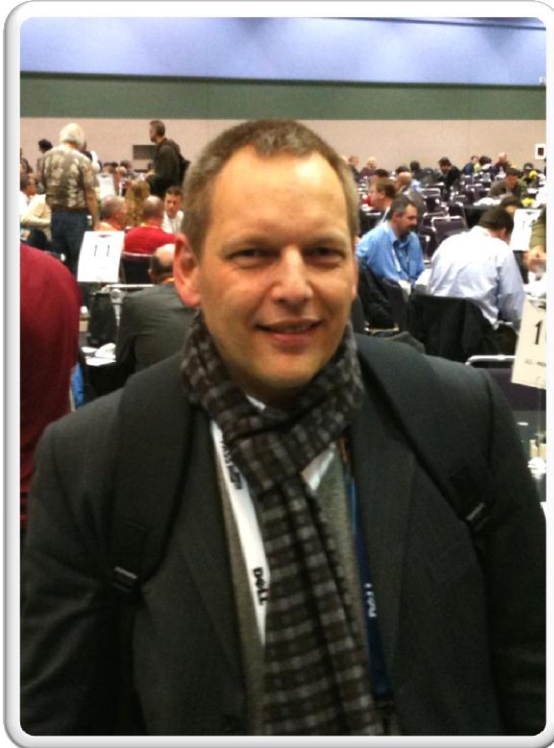
Silver Partner:



Veranstalter:



Speaker Info



Alexander Karl

.net - CDE

SQL + BI Consultant

Microsoft
CERTIFIED
Trainer

Microsoft
CERTIFIED
IT Professional

Database Administrator 2008
Server Administrator on Windows Server® 2008
Database Administrator on SQL Server® 2005

Gold Partner: **EMC²**

Silver Partner: **QUEST SOFTWARE**
Simplicity At Work™

Reply
Living network

SQLdays
konferenz

Agenda

- **Upgrade bisherige Pakete**
- **Deployment in SSIS Catalog DB**
 - Variablen & Parameter
 - Versionierung
- **Project & Environment**
- **Data Taps**
- **SSIS Catalog DB - Reports**

Whitepaper

The screenshot shows a Windows Internet Explorer browser window. The address bar contains the URL <http://msdn.microsoft.com/en-us/library/hh667275.aspx>. The page title is "5 Tips for a Smooth SSIS Upgrade to SQL Server 2012 - Windows Internet Explorer". The navigation bar includes "Home", "Library", "Learn", "Downloads", "Support", and "Community". A search bar is present with the text "Search MSDN with Bing". The main content area features the Microsoft SQL Server 2012 logo and the title "5 Tips for a Smooth SSIS Upgrade to SQL Server 2012" with the subtitle "SQL Server Technical Article".

5 Tips for a Smooth SSIS Upgrade to SQL Server 2012 - Windows Internet Explorer

http://msdn.microsoft.com/en-us/library/hh667275.aspx

5 Tips for a Smooth SSIS Up...

Home Library Learn Downloads Support Community Sign in | Deutschland - Deutsch |

Search MSDN with Bing

- MSDN Library
- Servers and Enterprise Development
- SQL Server
- SQL Server 2012
- Technical Articles
 - Microsoft White Papers
 - 5 Tips for a Smooth SSIS Upgrade to SQL Server 2012**
 - AlwaysOn Solution Guide: Offloading Read-Only Workloads
 - AlwaysOn Architecture Guide: Building a High Availability a
 - AlwaysOn Architecture Guide: Building a High Availability a
 - Choosing a Tabular or Multidimensional Modeling Experien
 - Data Access Tracing in SQL Server 2012
 - Exporting Master Data from Master Data Services
 - Extracting and Loading SharePoint Data in SQL Server Integ
 - Fast Track Data Warehouse Reference Guide for SQL Server
 - How to Choose the Right Reporting and Analysis Tools to S
 - Microsoft SQL Server AlwaysOn Solutions Guide for High A
 - Migration Guide: Migrating to AlwaysOn Availability Group
 - Migration Guide: Migrating to SQL Server 2012 Failover Clu
 - Power View Infrastructure Configuration and Installation: St
 - Resource Governor in SQL Server 2012
 - Securing the Tabular BI Semantic Model
 - Using DirectQuery in the Tabular BI Semantic Model

msdn

Microsoft®
SQL Server® 2012

5 Tips for a Smooth SSIS Upgrade to SQL Server 2012

SQL Server Technical Article

Gold Partner: **EMC²**

Silver Partner: **QUEST SOFTWARE**
Simplicity At Work™

Reply
Living network

SQL days
konferenz

Upgrade bisheriger Pakete

Assistent zum Konvertieren von Integration Services-Projekten

Task 'Paket ausführen' aktualisieren

[Hilfe](#)

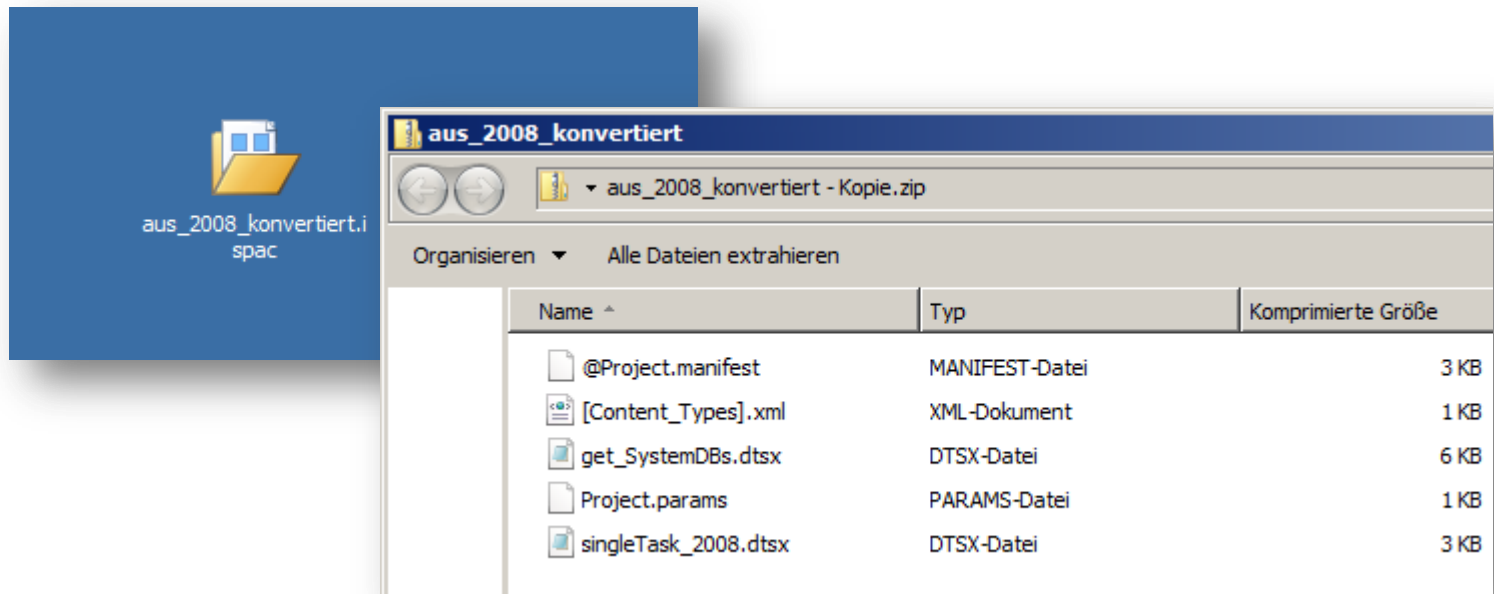
Es wurden keine Tasks 'Paket ausführen' gefunden. Klicken Sie auf 'Weiter', um den Vorgang fortzusetzen.
Die unten aufgeführten Pakete enthalten Tasks 'Paket ausführen'. Es wird empfohlen, jeden dieser Tasks vom Assistenten ändern zu lassen, damit über einen projektbasierten Verweis auf das zugehörige Paket zugegriffen werden kann, da dies die Bereitstellung vereinfacht.

Tasks:


<input type="checkbox"/>	Ubergeordnetes Paket	Taskname	Originalverweis	Verweis zuweisen
--------------------------	----------------------	----------	-----------------	------------------

< Zurück Weiter > Konvertieren Abbrechen

Upgrade .ispac



vereinfachtes <xml>



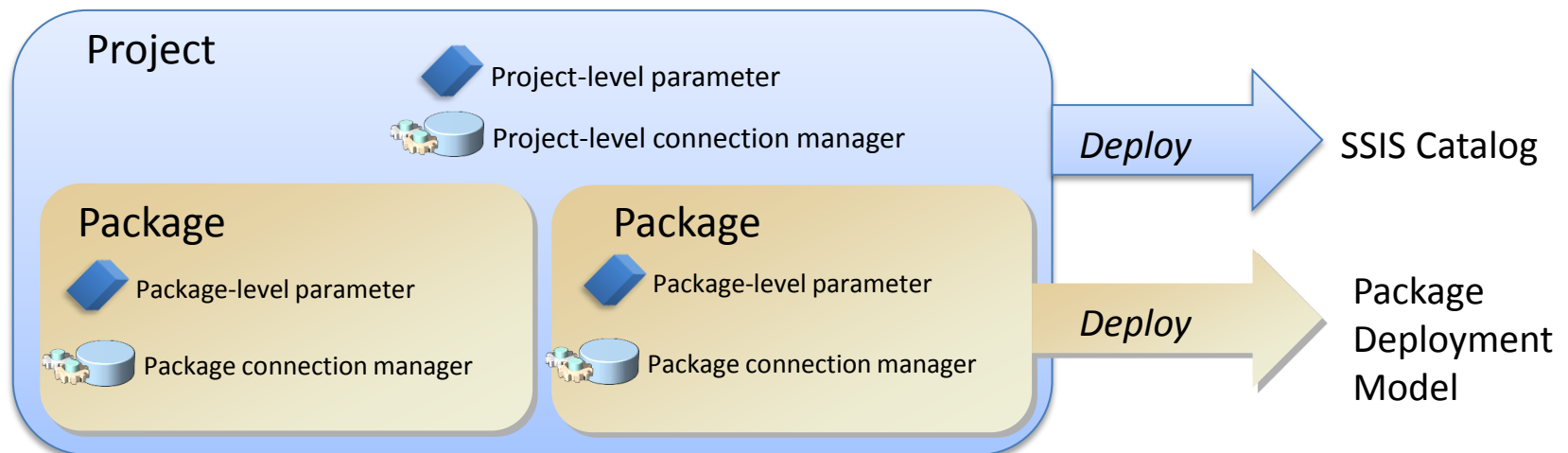
```
<?xml version="1.0"?>
<DTS:Executable DTS:ExecutableType="SSIS.Package.2"
  xmlns:DTS="www.microsoft.com/SqlServer/Dts">
  <DTS:Property DTS:Name="PackageFormatVersion">
  <DTS:Property DTS:Name="VersionComments"/>
  <DTS:Property DTS:Name="CreatorName">hp8530
    \Alex</DTS:Property>
  <DTS:Property
    DTS:Name="CreatorComputerName">HP8530</
  <DTS:Property DTS:Name="CreationDate"
    DTS:DataType="7">9/20/2012 9:16:45 AM</DTS
  <DTS:Property DTS:Name="PackageType">5</DTS:Pr
  <DTS:Property DTS:Name="ProtectionLevel">1</DTS
  <DTS:Property DTS:Name="MaxConcurrentExecutabl
    1</DTS:Property>
  <DTS:Property DTS:Name="PackagePriorityClass">0.
  <DTS:Property DTS:Name="VersionMajor">1</DTS:Pr
  <DTS:Property DTS:Name="VersionMinor">0</DTS:Pr
  <DTS:Property DTS:Name="VersionBuild">1</DTS:Pr
  <DTS:Property DTS:Name="VersionGUID">{3174052
    8EDF-DD51A93627FC}</DTS:Property>
  <DTS:Property DTS:Name="EnableConfig">0</DTS:Pr
  <DTS:Property DTS:Name="CheckpointFileName"/>
  <DTS:Property DTS:Name="SaveCheckpoints">0</DT
  <DTS:Property DTS:Name="CheckpointUsage">0</DT
  <DTS:Property
    DTS:Name="SuppressConfigurationWarnings">0
  <DTS:ConnectionManager>
  <DTS:Property DTS:Name="DelayValidation">0</
  <DTS:Property
    DTS:Name="ObjectName">localhost.msdb</I
  <DTS:Property DTS:Name="DTSID">{CD2E69F8-!
    65D7-5B1-452D-800B-65D7E
  <DTS:Property DTS:Name="Description"/>
  <DTS:Property DTS:Name="CreationName">OLE
  <DTS:ObjectData>
  <DTS:ConnectionManagers>
  <DTS:Property DTS:Name="Retain">0</DT
  <DTS:Property DTS:Name="ConnectionString"
    Source=localhost;Initial
    Catalog=msdb;Provider=SQLNCLI10.
    Security=SSPI;Application Name=SS
    {CD2E69F8-5B31-452D-800B-65D7E
    localhost.msdb;Auto Translate=False
  </DTS:ConnectionManagers>
```

```
<?xml version="1.0"?>
<DTS:Executable xmlns:DTS="www.microsoft.com/SqlServer/Dts"
  DTS:refId="Package"
  DTS:CreationDate="9/19/2012 4:51:10 PM"
  DTS:CreationName="SSIS.Package.3"
  DTS:CreatorComputerName="WINSRV"
  DTS:CreatorName="WINSRV\Administrator"
  DTS:DTSID="{C7C4A07F-B762-4242-8AEB-C0EC5738F011}"
  DTS:ExecutableType="SSIS.Package.3"
  DTS:LastModifiedProductVersion="11.0.2100.60"
  DTS:LocaleID="1031"
  DTS:ObjectName="package_dataflow1"
  DTS:PackageType="5"
  DTS:VersionBuild="14"
  DTS:VersionGUID="{498EABFB-3069-40AE-86F1-23E781EF2004}">
  <DTS:Property
    DTS:Name="PackageFormatVersion">6</DTS:Property>
  <DTS:ConnectionManagers>
  <DTS:ConnectionManager
    DTS:refId="Package.ConnectionManagers[flat_file_Destination]"
    DTS:CreationName="FLATFILE"
    DTS:DTSID="{45B09A46-D386-4525-82E4-EF34AE3ABB7E}"
    DTS:ObjectName="flat_file_Destination">
  <DTS:PropertyExpression
    DTS:Name="ConnectionString">"C:\\Users\\Administrator\\Desktop\\" +
  <DTS:ObjectData>
  <DTS:ConnectionManager
    DTS:Format="Delimited"
    DTS:LocaleID="1031"
    DTS:HeaderRowDelimiter="_x000D_x000A_"
    DTS:RowDelimiter=""
    DTS:TextQualifier="_x003C_none_x003E_"
```

2012

Package vs. Project Deployment

- **Package Deployment >> msdb**
- **Project Deployment >> SSIS Catalog**



Package – Project im Vergleich

	Package	Project
Deployment erfolgt als	Package	Project
Compiled Datenformat	mehrere .dtsx Files	ein .ispac File
Gespeichert in	msdb oder Filesystem	SSIS Catalog
Dynamische Konfiguration	Package configurations	Mapping mit Environment-Variablen
Troubleshooting	Für jedes Paket zu konfigurieren	SSIS Catalog enthält mitgelieferte Reports

SSIS Catalog DB

- **Erstellen des Catalogs mit Wizard**
- **Voraussetzungen**
 - SQL-Server 2012
 - SQL CLR enabled
- **ein Catalog pro Instance (SSISDB)**

SSIS Catalog

Home Library Learn Downloads Support Community Sign in | Deutschland - Deutsch | Settings

Search MSDN with Bing

Stored Procedures (Integration Services Catalog)

This topic has not yet been rated - [Rate this topic](#)

This section describes the Transact-SQL stored procedures that are available for administering Integration Services projects that have been deployed to an instance of SQL Server.

Call the Integration Services stored procedures to add, remove, modify, or execute objects that are stored in the **SSISDB** catalog.

The default name of the catalog is SSISDB. The objects that are stored in the catalog include projects, packages, parameters, environments, and operational history.

You can use the database views and stored procedures directly, or write custom code that calls the managed API. Management Studio and the managed API query the views and call the stored procedures that are described in this section to perform many of their tasks.

▲ In This Section

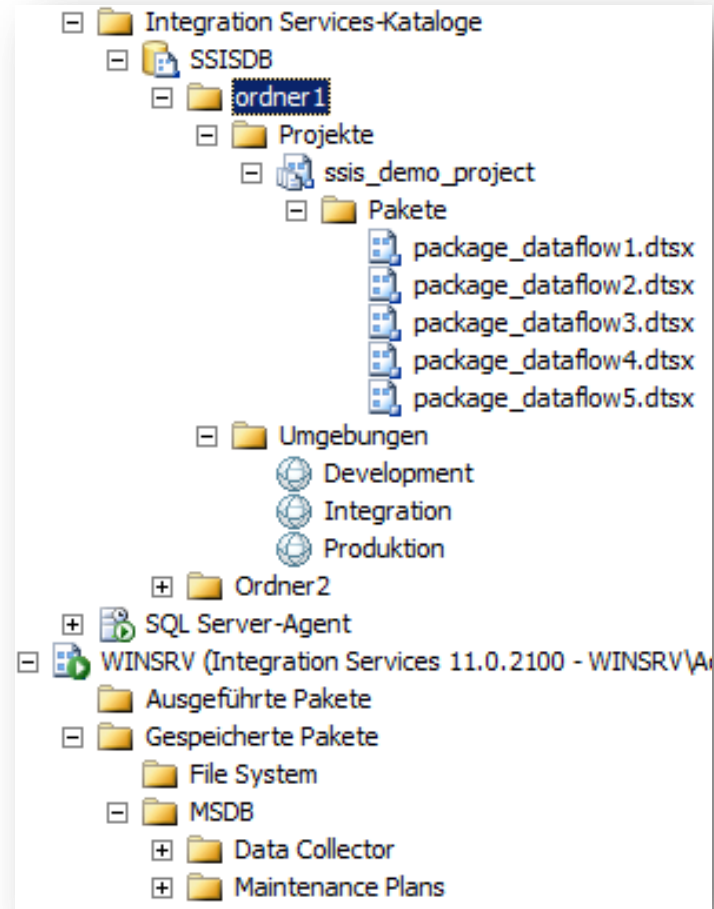
catalog.add_data_tap	Adds a data tap on the output of a component in a package data flow.
catalog.add_data_tap_by_guid	Adds a data tap to a specific data flow path in a package data flow.
catalog.check_schema_version	Determines whether the SSISDB catalog schema and the Integration Services binaries (ISServerExec and SQLCLR assembly) are compatible.
catalog.clear_object_parameter_value (SSISDB Database)	Clears the value of a parameter for an existing Integration Services project or package that is stored on the server.

SSIS Catalogs

■ SSIS Catalog

- Ordner
 - Projekt
 - Paket
 - Umgebung

■ legacy



Demo

Demo

Gold Partner:  **EMC²**

Silver Partner:  **QUEST SOFTWARE[®]**
Simplicity At Work™

 **Reply**
Living network

 **SQL days**
konferenz

Variablen & Parameter

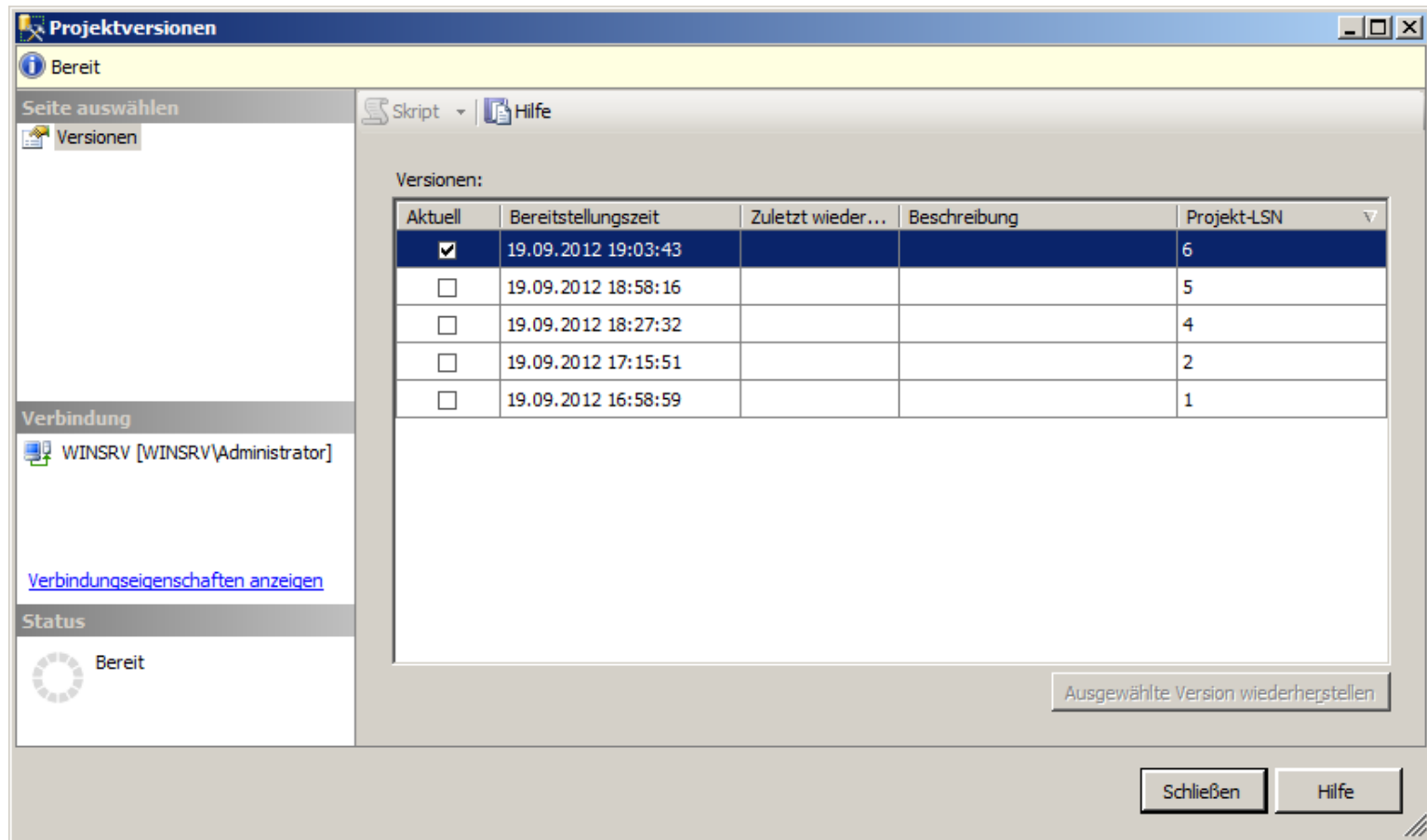
bisher

- Variablen

neu

- Variablen und Parameter
 - + Systemvariablen
 - \$Package::pa_Variable1
 - \$Project::pr_Variable1
 - User::uv_Variable1
 - + Spalten

Versionierung



Projektversionen

Bereit

Seite auswählen

Versionen

Skript | Hilfe

Versionen:

Aktuell	Bereitstellungszeit	Zuletzt wieder...	Beschreibung	Projekt-LSN
<input checked="" type="checkbox"/>	19.09.2012 19:03:43			6
<input type="checkbox"/>	19.09.2012 18:58:16			5
<input type="checkbox"/>	19.09.2012 18:27:32			4
<input type="checkbox"/>	19.09.2012 17:15:51			2
<input type="checkbox"/>	19.09.2012 16:58:59			1

Verbindung

WINSRV [WINSRV\Administrator]

[Verbindungseigenschaften anzeigen](#)

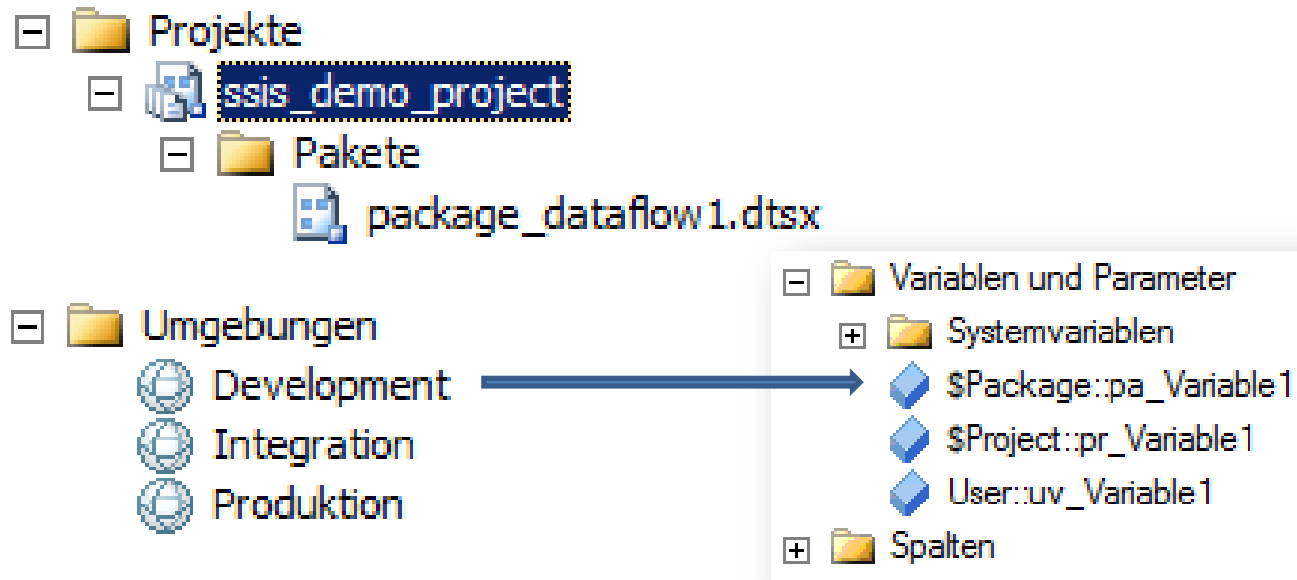
Status

Bereit

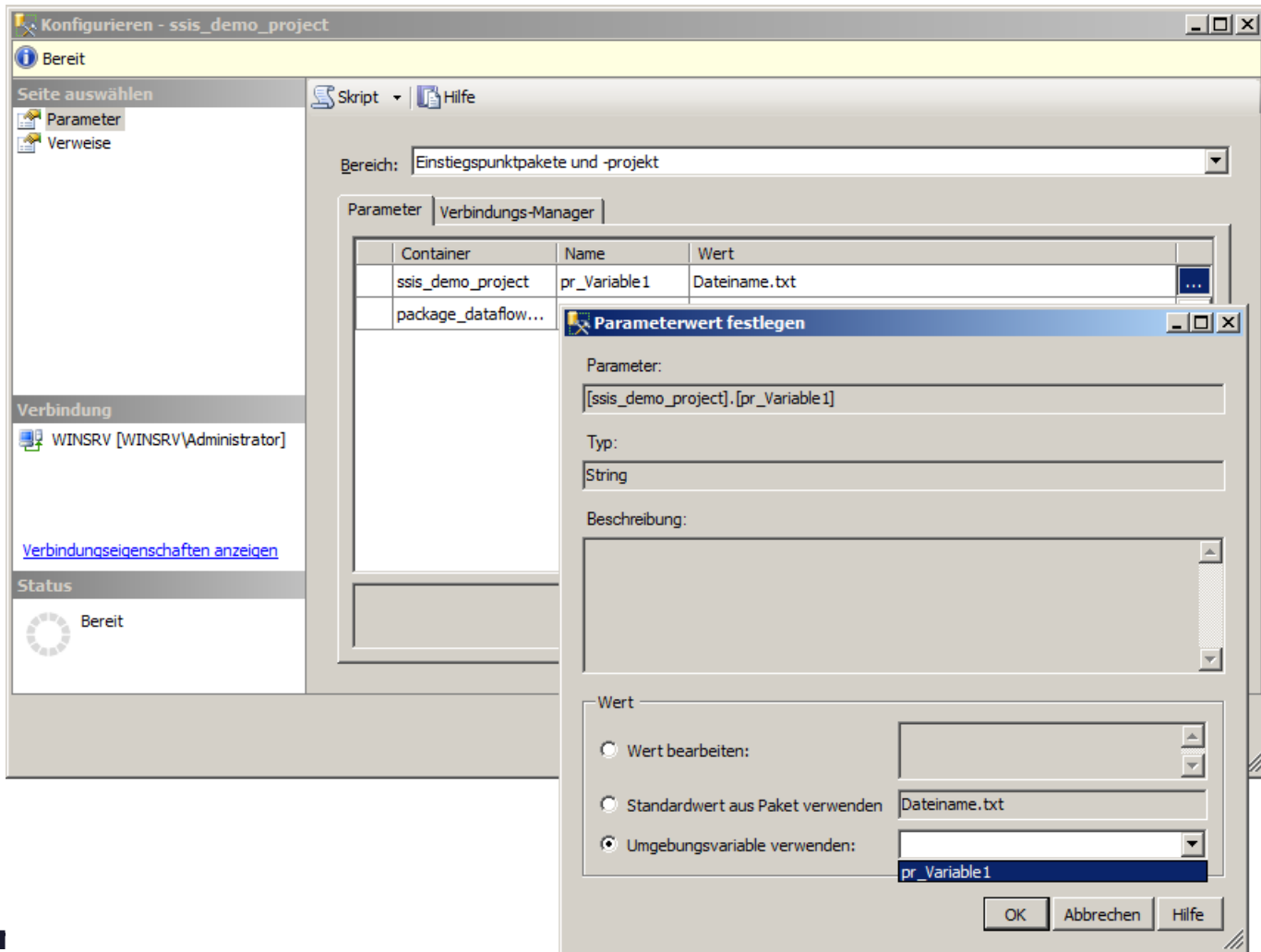
Ausgewählte Version wiederherstellen

Schließen | Hilfe

Project & Environment

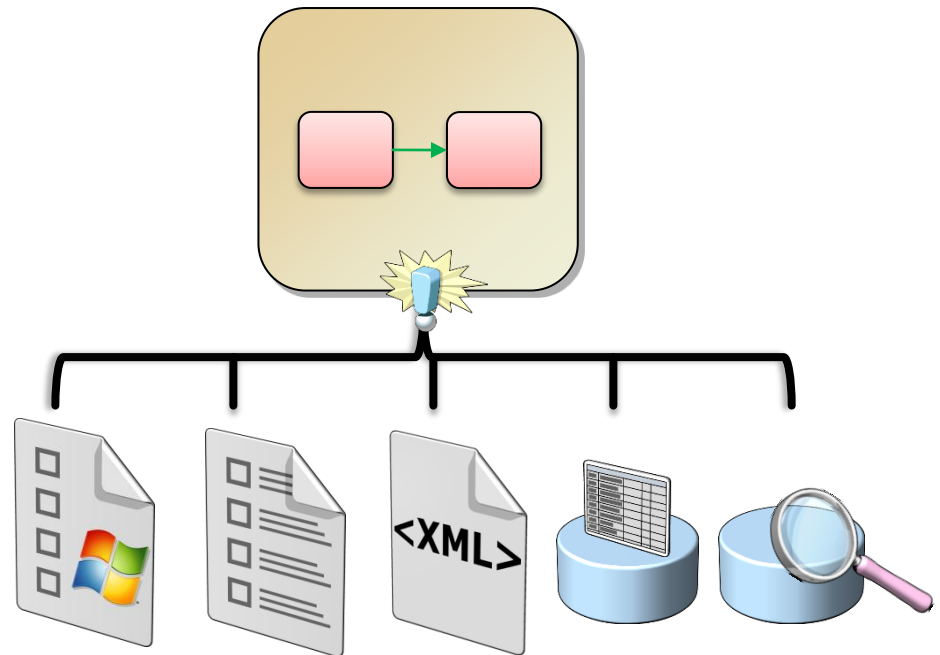


Project & Environment



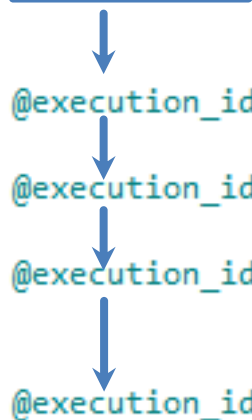
SSIS Log Providers

- Windows Event Log
- Text File
- XML File
- SQL Server
- SQL Server Profiler

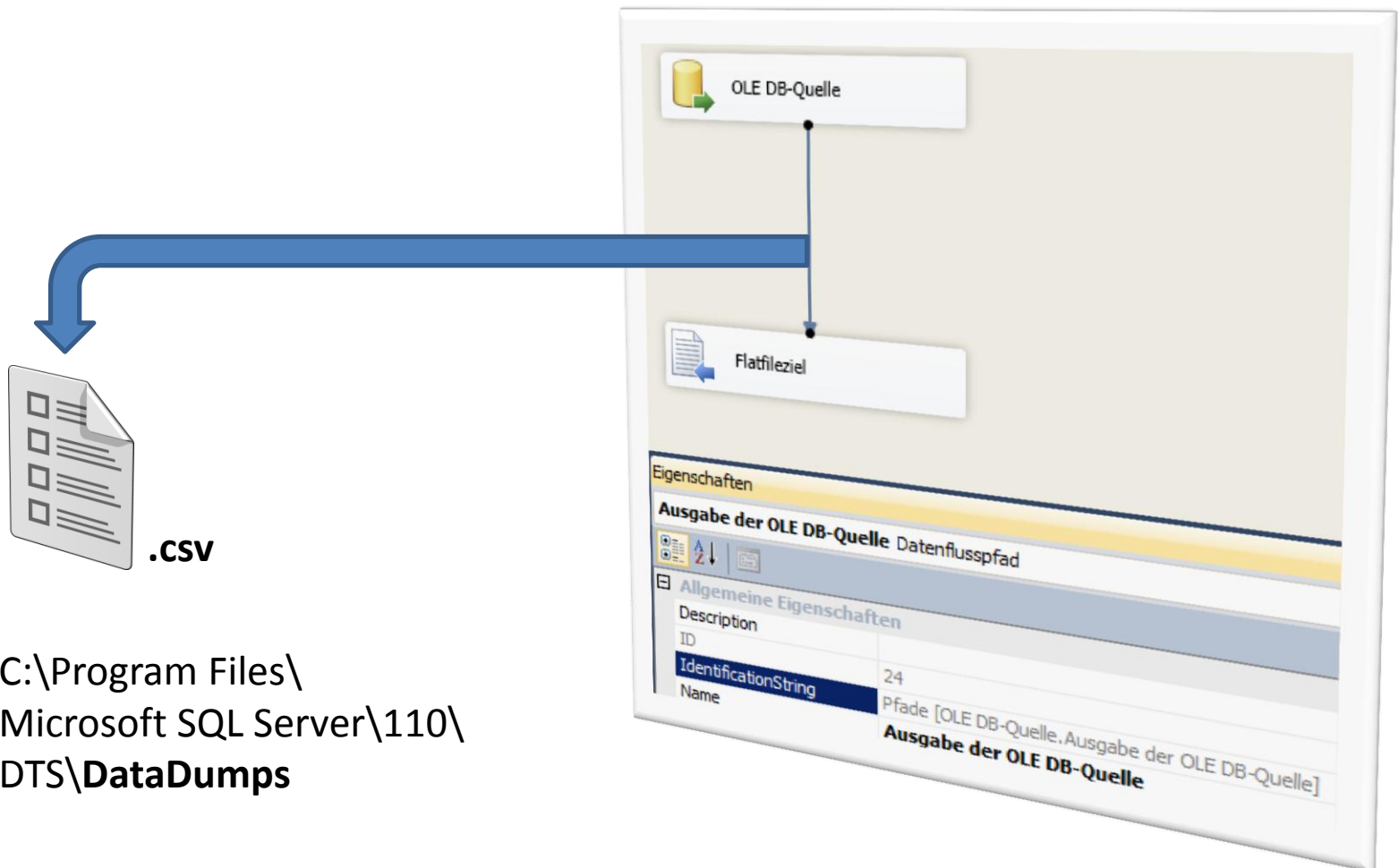


Paket-Ausführung mit TSQL

```
1
2  DECLARE @execution_id bigint
3
4
5  EXEC catalog.create_execution          @execution_id OUTPUT , @...
6
7
8  EXEC catalog.set_execution_parameter_value @execution_id , @...
9
10 EXEC catalog.set_execution_parameter_value @execution_id , @...
11
12 EXEC catalog.set_execution_parameter_value @execution_id , @...
13
14
15 EXEC catalog.start_execution          @execution_id
16
```



Data Tap >> Datenziel



C:\Program Files\
Microsoft SQL Server\110\
DTS\DataDumps

Config der Data Taps

▪ mit TSQL

```
exec catalog.add_data_tap
    @execution_id
    , @task_package_path = '\Package\DFT'
    , @dataflow_path_id_string = 'Pfade [OLE DB-Quelle.Ausgabe der OLE DB-Quelle]'
    , @data_filename = 'DTap_OLE DB-Quelle.csv'
```

Demo

Demo

Gold Partner:  **EMC²**

Silver Partner:  **QUEST SOFTWARE[®]**
Simplicity At Work™

 **Reply**
Living network

 **SQL days**
konferenz

SSIS Catalog Reports



Übersicht

am WINSRV um 20.09.2012 11:56:30

Dieser Bericht stellt eine Übersicht der Pakettasks und -parameter bereit, einschließlich der Informationen zur Ausführung und Überprüfung.

[Meldungen anzeigen](#)

[Leistung anzeigen](#)

Ausführungsinformationen

Vorgangs-ID	62
Paket	ordner1\ssis_demo_project\package_dataflow1.dtsx
Umgebung	-
Status	Erfolgreich

Dauer (s)	1,811
Startzeit	20.09.2012 11:56:26
Beendigungszeit	20.09.2012 11:56:28
Aufrufer	WINSRV\Administrator

Übersicht über die Ausführung

Filter: Ergebnis: Alle; (3 weitere)

Ergebnis	Dauer (s)	Paketname	Taskname	Ausführungspfad
Erfolgreich	0,203	package_dataflow1.dtsx	package_dataflow1	\package_dataflow1
Erfolgreich	0,125	package_dataflow1.dtsx	DFT_get-DatabaseInfo	\package_dataflow1\DFT_get-DatabaseInfo

Verwendete Parameter

Name	Wert	Datentyp
CALLER_INFO		String
DUMP_EVENT_CODE	0	String
DUMP_ON_ERROR	False	Boolean
DUMP_ON_EVENT	False	Boolean
LOGGING_LEVEL	1	Int32
pa_Variable1		String
pr_Variable1	Dateiname.txt	String
SYNCHRONIZED	False	Boolean

Eigenschaftsüberschreibungen

Eigenschaftspfad	Eigenschaftswert
------------------	------------------

FRAGEN



Gold Partner: **EMC²**

Silver Partner:  **QUEST SOFTWARE[®]**
Simplicity At Work™

 **Reply**
Living network

SQLdays
konferenz

Hat Ihnen mein Vortrag gefallen?



Ich freue mich auf Ihr Feedback!

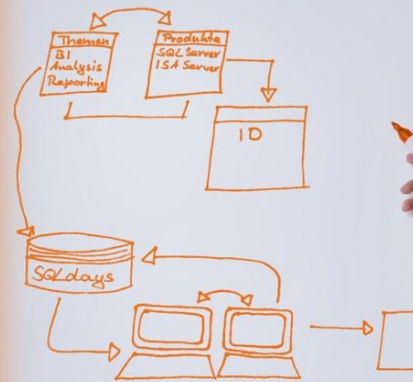
Gold Partner: **EMC²**

Silver Partner: **QUEST SOFTWARE[®]**
Simplicity At Work™

Reply
Living network

SQLdays
konferenz

SQLdays konferenz



VIELEN DANK!

20. – 21. September 2012, Rosenheim

Gold Partner:



Silver Partner:



Veranstalter:

